

Oxford Poverty and Human Development Initiative (OPHI)

www.ophi.org.uk

Oxford Dept of International Development,
Queen Elizabeth House, University of Oxford



Country Briefing: Yemen

Multidimensional Poverty Index (MPI) At a Glance

For an explanation of the MPI and details of the resources available in the MPI Data Bank, please see the last page of the briefing.

This Country Briefing presents the results of the Multidimensional Poverty Index (MPI) and explains key findings graphically. More information, international comparisons and MPI resources are available at www.ophi.org.uk/multidimensional-poverty-index/.

The MPI was constructed by OPHI for UNDP's 2013 Human Development Report (<http://hdr.undp.org/en/>).

Please cite this document as: Oxford Poverty and Human Development Initiative (2013). "Yemen Country Briefing", Multidimensional Poverty Index Data Bank. OPHI, University of Oxford. Available at: www.ophi.org.uk/multidimensional-poverty-index/mpi-country-briefings/.

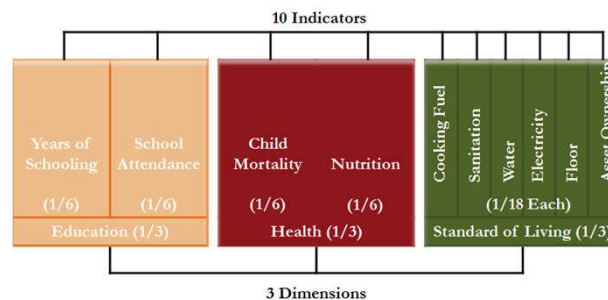
For information on the original MPI methodology, see the revised paper, Alkire, S. and Santos, M.E. (2013), "Measuring Acute Poverty in the Developing World: Robustness and Scope of the Multidimensional Poverty Index", OPHI Working Paper 59. Available at www.ophi.org.uk/wp-content/uploads/ophi-wp-59.pdf.

For information on updates that took place in 2011, see Alkire, S., Roche, J.M., Santos, M.E. and Seth, S. (2011), "Multidimensional Poverty Index 2011: Brief Methodological Note". Available at: www.ophi.org.uk/wp-content/uploads/MPI_2011_Methodology_Note_4-11-2011_1500.pdf.

For information on updates that took place in 2013, see Alkire, S., Conconi, A. and Roche, J.M. (2013), "Multidimensional Poverty Index 2013: Brief Methodological Note and Results". Available at: www.ophi.org.uk/multidimensional-poverty-index/.

Inside the MPI

The MPI has three dimensions and 10 indicators, which are shown in the box below. Each dimension is equally weighted, each indicator within a dimension is also equally weighted, and these weights are shown in brackets within the diagram.



Country Profile

Yemen-MICS-2006

Country: Yemen

Year: 2006 Survey: MICS

Region: Arab States

Multidimensional Poverty Index (MPI)

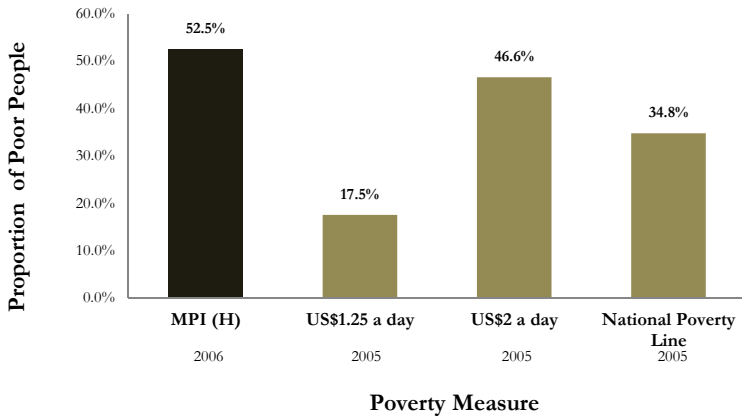
The MPI reflects both the **incidence** or headcount ratio (H) of poverty – the proportion of the population that is multidimensionally poor – and the average **intensity** (A) of their poverty – the average proportion of indicators in which poor people are deprived. The MPI is calculated by multiplying the incidence of poverty by the average intensity across the poor ($H \times A$). A person is identified as poor if he or she is deprived in at least one third of the weighted indicators. The following table shows the multidimensional poverty rate (MPI) and its two components: incidence of poverty (H) and average intensity of deprivation faced by the poor (A). The first and second columns of the table report the survey and year used to generate the MPI results. Those identified as "Vulnerable to Poverty" are deprived in 20% - 33% of weighted indicators and those identified as in "Severe Poverty" are deprived in 50% or more.

Survey	Year	Multidimensional Poverty Index (MPI = H×A)	Percentage of Poor People (H)	Average Intensity Across the Poor (A)	Percentage of Population Vulnerable to Poverty	Percentage of Population in Severe Poverty
MICS	2006	0.283	52.5%	53.9%	13.0%	31.9%

Comparing the MPI with Other Poverty Measures

Chart A compares the poverty rate using the MPI with three other commonly used poverty measures. The height of the first column denotes the percentage of people who are MPI poor (also called the incidence or headcount ratio). The second and third columns denote the percentages of people who are poor according to the \$1.25 a day income poverty line and \$2.00 a day line, respectively. The final column denotes the percentage of people who are poor according to the national income poverty line. The table on the right-hand side reports various descriptive statistics for the country. The monetary poverty statistics are taken from the year closest to the year of the survey used to calculate the MPI. The year is provided below each column in chart A.

A. Comparative Poverty Measures



Summary

Multidimensional Poverty Index	0.283
Percentage of MPI Poor (H)	52.5%
Average Intensity of Deprivation (A)	53.9%
Percentage of Income Poor (\$1.25 a day) [‡]	17.5%
Percentage of Income Poor (\$2.00 a day) [‡]	46.6%
Percentage of Poor (National Poverty Line) [‡]	34.8%

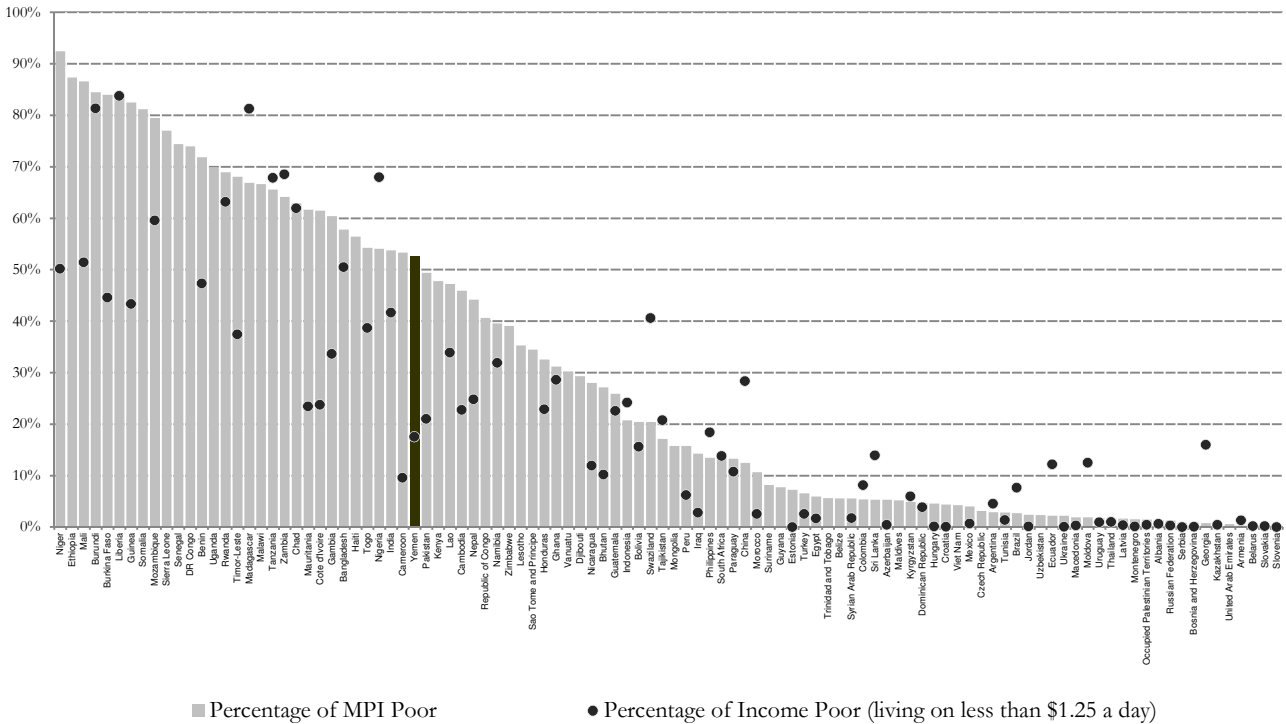
‡ The World Bank (2012). "The World DataBank". Washington, DC. [available at <http://databank.worldbank.org/data/home.aspx>, accessed September 2012]

Comparing the Headcount Ratios of MPI Poor and \$1.25/day Poor

Chart B shows the percentage of people who are MPI poor (also called the incidence or headcount ratio) in the developing countries analysed. The column denoting this country is dark, with other countries shown in light grey. The dark dots denote the percentage of people who are income poor according to the \$1.25 a day poverty line in each country. Chart A tells you the year this data comes from for this country. Dots are only shown where the income poverty data available are taken from a survey fielded within three years of the MPI survey year.

Percentage of Poor People

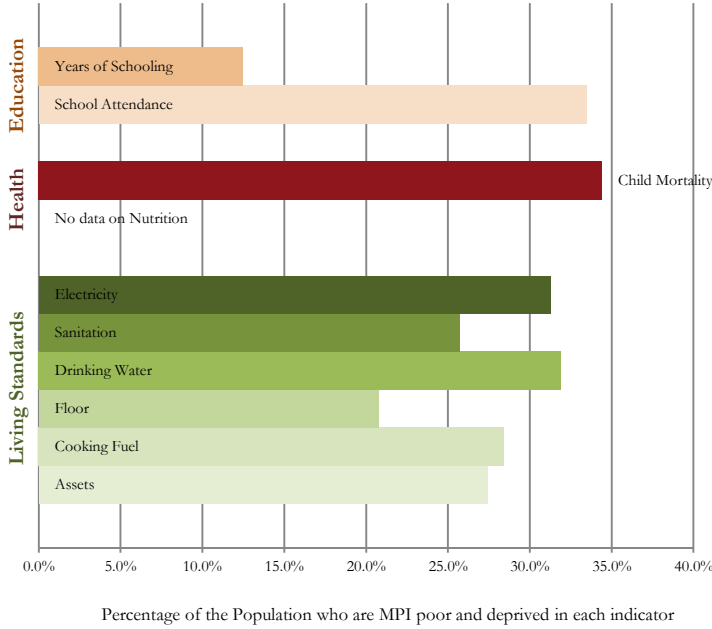
B. Headcounts of MPI Poor and \$1.25/day Poor



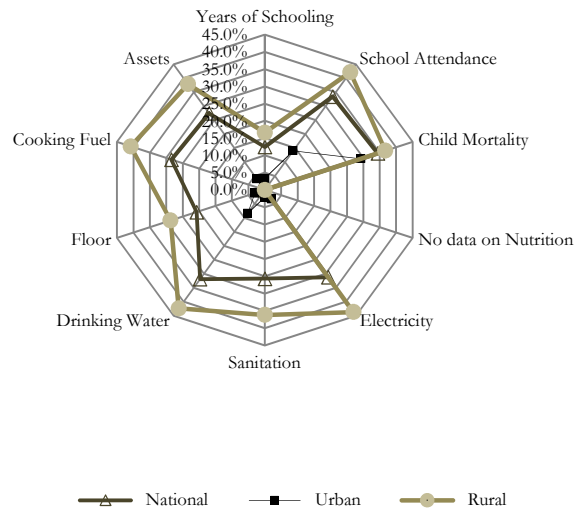
Incidence of Deprivation in Each of the MPI Indicators

The MPI uses 10 indicators to measure poverty in three dimensions: education, health and living standards. The bar chart to the left reports the proportion of the population that is poor and deprived in each indicator. We do not include the deprivation of non-poor people. The spider diagram to the right compares the proportions of the population that are poor and deprived across different indicators. At the same time it compares the performance of rural areas and urban areas with that of the national aggregate. Patterns of deprivation may differ in rural and urban areas. The MPI is also the weighted sum of these deprivation counts, which makes it useful for monitoring change.

C. Deprivations in each Indicator

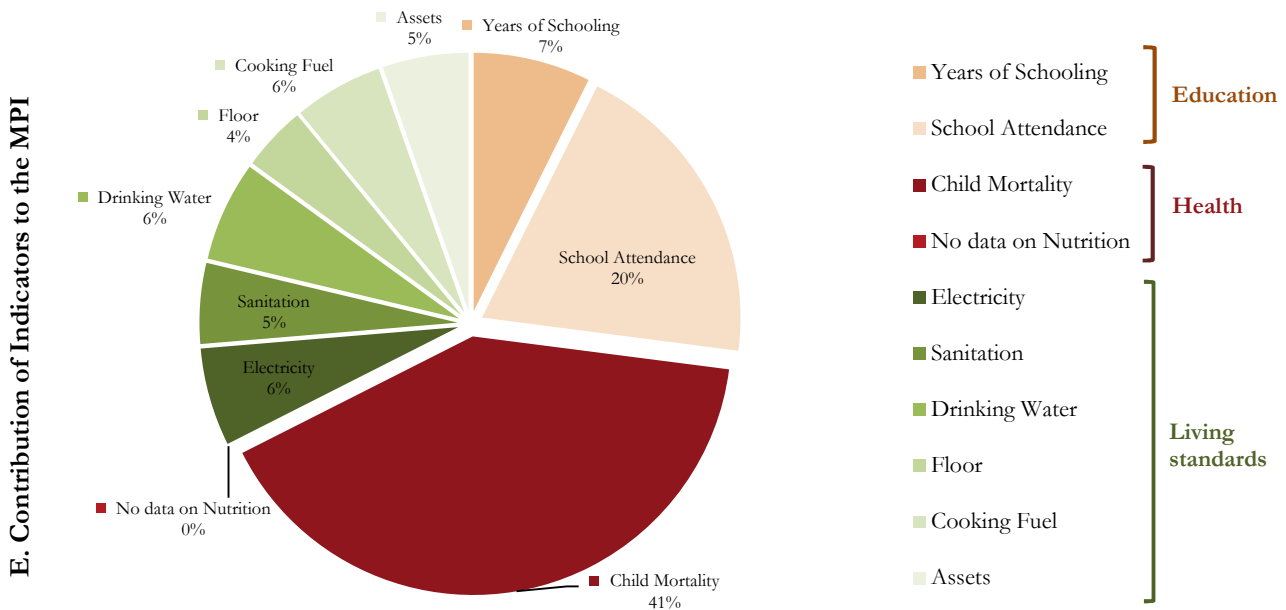


D. Percentage of the Population MPI Poor and Deprived



Composition of the MPI

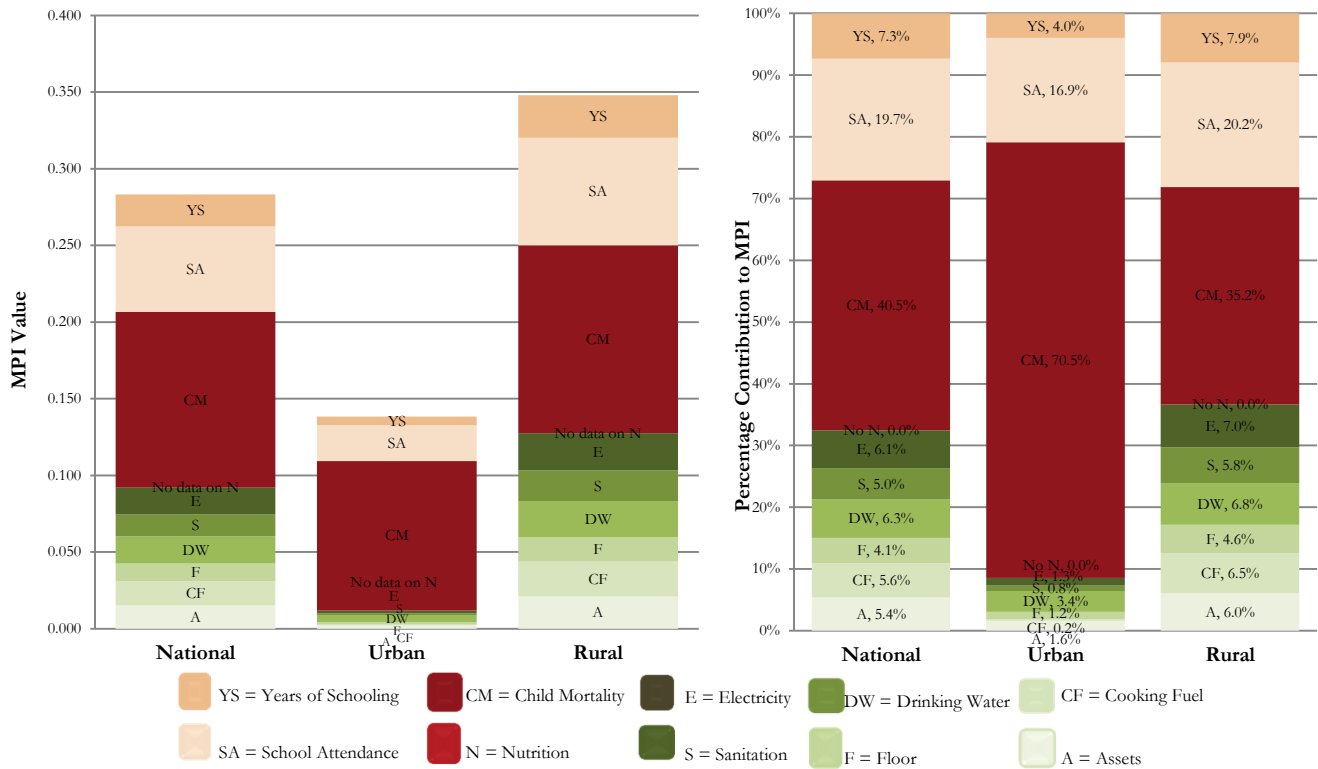
The MPI can be broken down to see directly how much each indicator contributes to multidimensional poverty. The following figure shows the composition of the MPI using a pie chart. Each piece of the pie represents the percentage contribution of each indicator to the overall MPI of the country. The larger the slice of the pie chart, the bigger the weighted contribution of the indicator to overall poverty.



Decomposition of MPI by Region

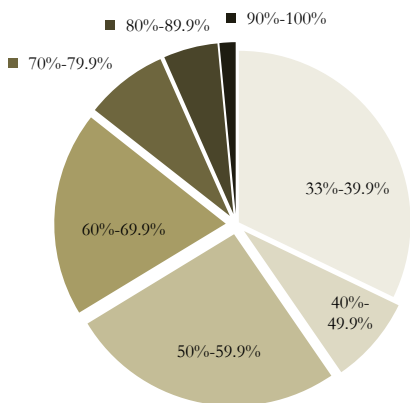
The MPI can be decomposed by different population subgroups, then broken down by dimension, to show how the composition of poverty differs between different regions or groups. On the left-hand side of column chart F, the height of each of the three bars shows the level of MPI at the national level, for urban areas, and for rural areas, respectively. Inside each bar, different colours represent the contribution of different weighted indicators to the overall MPI. On the right-hand side of column chart F, the colours inside each bar denote the percentage contribution of each indicator to the overall MPI, and all bars add up to 100%. This enables an immediate visual comparison of the composition of poverty across regions.

F. Contribution of Indicators to the MPI at the National Level, for Urban Areas, and for Rural Areas



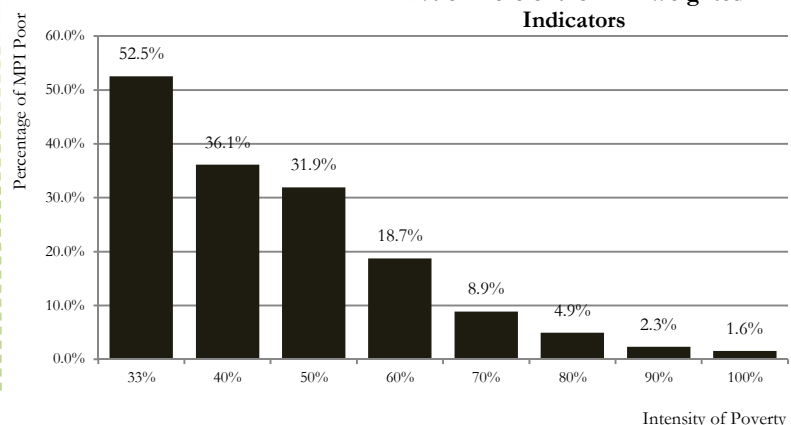
Intensity of Multidimensional Poverty

Recall that i) a person is considered poor if they are deprived in at least one third of the weighted indicators and ii) the intensity of poverty denotes the proportion of weighted indicators in which they are deprived. A person who is deprived in 90% has a greater intensity of poverty than someone deprived in 40%. The following figures show the percentage of MPI poor people who experience different intensities of poverty. The pie chart below breaks the poor population into groups based on the intensity of their poverty. For example, the first slice shows deprivation intensities of greater than 33% but strictly less than 40%. It shows the proportion of poor people whose intensity (the percentage of indicators in which they are deprived) falls into each group. The column chart H reports the proportion of the population in a country that is poor in that percentage of indicators or more. For example, the number over the 40% bar represents the percentage of people who are deprived in 40% or more weighted indicators.



G. Intensity of Deprivation Among MPI Poor

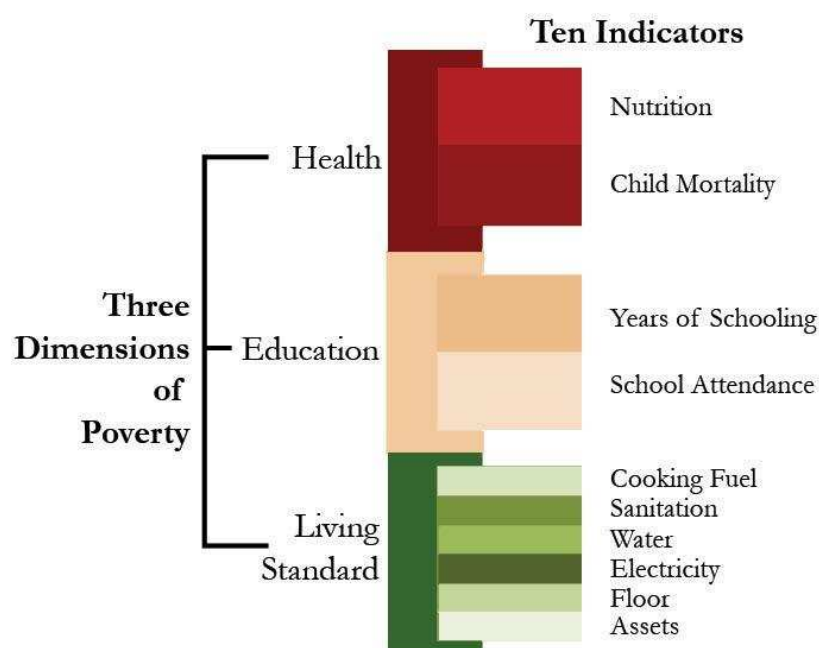
H. Percentage of People Deprived in X% or more of the MPI Weighted Indicators



Multidimensional Poverty Index

~ Global Multidimensional Poverty Index 2013 ~
covering 104 countries and sub-national regions of 65 countries

The Multidimensional Poverty Index (MPI for short) is an international measure of acute poverty covering 104 developing countries. The MPI complements income-based poverty measures by reflecting the multiple deprivations that people face at the same time. The MPI identifies deprivations across health, education and living standards, and shows the number of people who are multidimensionally poor and the deprivations that they face at the household level. It uses ten indicators across three dimensions, as the diagram below shows.



Each dimension is equally weighted, and each indicator within each dimension is equally weighted. A person is identified as multidimensionally poor if he or she is deprived in at least one third of the dimensions; one deprivation alone may not represent poverty.

Used as an analytical tool, the MPI shows:

Incidence of poverty: the percentage of multidimensionally poor people or headcount ratio, H ;

Intensity of poverty: the average number of deprivations poor people face at the same time, A ;

Composition of poverty: by each of the 10 indicators and their weighted contributions.

These statistics (H , A , indicators) may also be analysed by subnational regions, ethnic groups and rural/urban areas.

The global MPI was developed and applied by OPHI for the United Nations Development Programme's flagship *Human Development Report*, and has featured in the HDR since 2010. It mainly uses the most recent Demographic and Health or Multiple Indicator Cluster surveys available from 2002 to 2012.

The MPI implements a rigorous technique for multidimensional measurement created by Sabina Alkire and James Foster. The same method can be used with different indicators, weights and cutoffs to develop national MPIs that reflect the priorities of individual countries.

OPHI's MPI Data Bank

www.ophi.org.uk/multidimensional-poverty-index/

OPHI's global MPI Data Bank contains a wealth of resources on multidimensional poverty in more than 100 developing countries, enabling users to see how poverty is experienced in different parts of the world, zoom in on sub-national regions, or explore the character of poverty by different indicators. Follow the links below to find out more.

- **[MPI Country Briefings](#)**: Short, country-specific summaries on the results of the MPI analyses. A number of the briefings include data at the sub-national level.
- **[MPI Map](#)**: An interactive world map that enables you to navigate the world according to either the MPI as a whole or by individual dimensions and indicators of MPI poverty. Static maps are available for download and use in presentations.
- **[MPI Data Tables - Main MPI Results](#)**: A table which presents the basic MPI results and sorts 104 countries from low to high.
- **[MPI Data Tables – MPI at the Sub-national Level](#)**: This table reports the MPI, its two components - the Headcount Ratio and the Intensity of Deprivation among the poor - and other indicators of multidimensional poverty for 663 regions of 65 countries.
- **[MPI Data Tables – MPI over Time](#)**: This table shows the value and confidence intervals for the main MPI results of 22 countries for which we have comparable data over time.
- **[MPI Methodology](#)**: OPHI's MPI methodological notes explain how the global MPI is calculated and shares the updates that have taken place since it was first reported in 2010.
- **[MPI Resources](#)**: MPI publications collected in one place, including the key academic papers and exchanges, and training material for producing a global or national MPI.
- **[MPI FAQs](#)**: All your questions on MPI answered.
- **[MPI Background](#)**: A brief history of the MPI, including how it came to be developed for publication in UNDP's *Human Development Report*, and how it is being used now.
- **[MPI Case Studies](#)**: Stories of people who are poor according to the MPI in their country: their hopes, strengths and challenges.
- **[MPI Podcasts](#)**: A series of interviews with OPHI researchers, leading academics working on poverty measurement, statisticians and others.
- **[Making your own MPI](#)**: Adaptations of the global MPI for other purposes, such as national poverty measurement, targeting, child poverty measurement and empowerment.
- **[Online training portal](#)**: Resources on multidimensional measurement techniques, including video and audio files, lecture slides, exercises and reading lists.